

how to vote

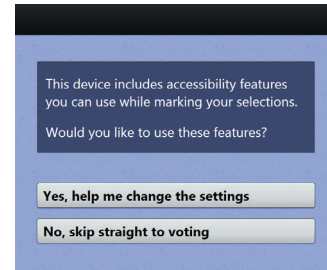
1

Use the touch screen to select your preferred language (if multiple languages are available).



2

If you'd like to use audio/accessible features, you may choose to do so now, or select **No**, **skip straight to voting**.



3

When ready, select **Begin Voting**.



4

Select your choice; select **Next** to go to the next contest.



5

Review your ballot. When you're ready, select **Print**.



6

Retrieve your printed ballot sheet(s) from the printer and take them to the scanning device to cast your ballot. **Scan one sheet at a time.**

